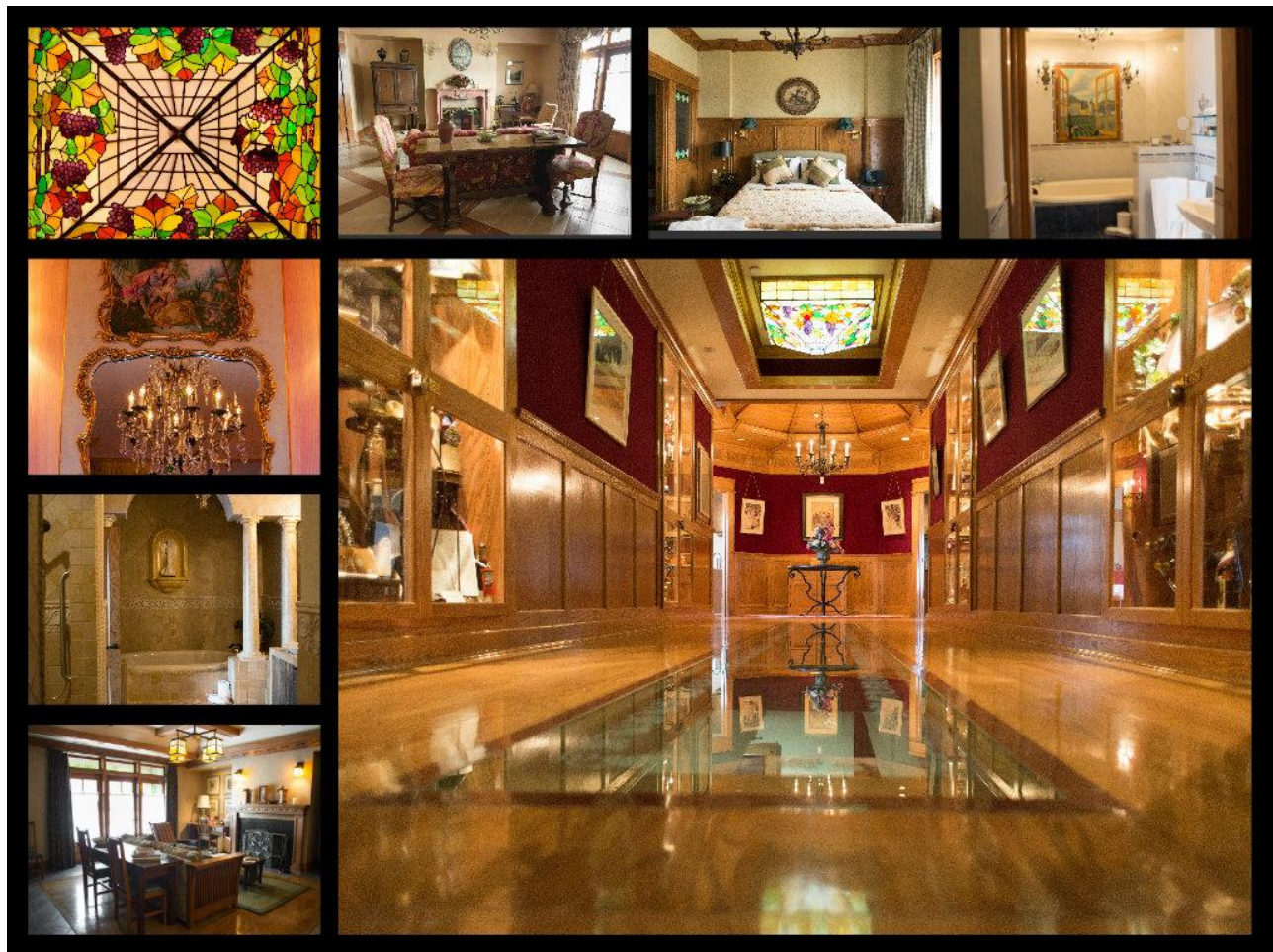




# Guest Suites at Lynfred





Whether it is an Italian countryside or French chateau, Bavarian Germany or turn of the century America, a stay in our magnificent wine country themed suites is an escape from reality.

Your stay includes choice of 2 bottles of wine (each up to \$35),  
a charcuterie and cheese board and breakfast for two.

January-December 2022 and 2023:  
\$355.00 plus tax Saturday night only

#### *Amenities*

*~All suites include balconies and fireplaces ~Heated bathroom floors ~Hair dryers and lavish toiletries  
~Heated towel racks ~Rain showers with body sprays ~Plush terry cloth bathrobes and slippers  
~Flat screen HD televisions ~Ironing board and iron  
~ Spacious walk-in closet ~Fresh flowers in your suite  
~Mini refrigerators*

#### *Member Discounts*

*~5% off for 0-5 years~10% off for 6-10 years~15% off for 11+ years*

#### *Policies*

*~Rates are subject to change  
~Holiday rates will be quoted individually ~Must be 21 years of age ~No pets allowed ~2 guests per suite  
~All rooms are non-smoking ~Check in between 3:00pm-6:00pm ~Check out 11:00am  
~Handicap accessible until 7:00pm*

To guarantee your reservation, we require a credit card at the time of booking. Full payment is due 30 days prior to your stay. When using a gift certificate for payment, a credit card for incidentals is still required. Due to our intimate size, cancellations affect us significantly. Your deposit, less a \$25 processing fee per room booked, will be happily refunded if we receive notification at least 14 days prior to your arrival date. If you cancel between 14 days and the week before your reservation, half of the room rate becomes non-refundable. If you give us less than seven days' notice, we will charge you for the entire stay booked.



**Overview:** The concept of Lynfred Winery came from “two crazy people”. It was entirely a creation of the love and ingenuity of Fred Koehler and his late wife Lynn. Between Lynn’s ideas and Fred’s practicality, they created one of the most unique attractions- not to mention gourmet tastes-in the country today.

**Accommodations:** In a smoke-free environment, Lynfred Winery Bed & Breakfast offers four luxurious, European style suites fashioned to represent American, French, German and Italian wine countries. Each suite is meticulously decorated to accurately represent the country, through architecture, fabrics, tile and furnishings.

**American Suite:** Inspired by turn of the century American vineyards, the deluxe American suite features Stickley furniture from the original Arts & Crafts movement. An appropriate theme of grapes and vines makes this suite approachable and relaxing as the American Midwest. The wine-colored whirlpool rests in classic, breathtaking tile work in the same handmade patterns of the turn of the century tile makers in Illinois.

**French suite:** A rhapsody of whimsical romance and enchantment are omnipresent in the French wine country décor. From the hand carved garlands of roses to the French blue limestone on the hearth and wine bar we are treated to the best of the French countryside. Pattern on pattern fabrics and needlepoint carpets showcase the period style French furniture. Crystal and bronze chandeliers glitter throughout the suite. Shades of blue marbled tile, enhanced with gold leaf, accent a tromp l’oeil painting of a Provence vineyard by artist Charles Nitti, while cherubs watch over the rain shower.

**German suite:** The cozy German suite represents an idea of comfort or Gemütlichkeit in the wooden houses of Bavaria. The suite furnished in Biedermeier furniture uses auras of green (common to the green bottles of Riesling wine). Rustic oak paneling and acorn carving has been used to enhance the authentic feeling. Deep green marble adorns the wine bar and fireplace. A highlight of the room is a pair of hand-forged sconces featuring acorns and the famous Black Forest bears. The bath tiled in Villeroy and Bosch tiles includes a one of a kind trompe l’oeil window by artist Charles Nitti. In a niche near the spa tub is another surprise, a mother Black Forest bear with her cubs is a charming if somewhat kitschy, towel holder.

**Italian Suite:** A walk in the Italian countryside would describe the experience of this shell themed Italian Suite. Soft colors are reflected in the heated stone tile floors and the country Italian furnishings. The grand living area features a carved rose marble fireplace and antique Murano glass sconces. The bedroom features Venetian style furniture and a romantic print of cupids, taken from the Medici archives in Florence. Walking into the magnificent spa bathroom is a step back into the time of the Caesars. The antique Jerusalem stone mosaic floor and tumbled Italian marble walls is a beautiful backdrop for the columned Roman bath. A niche in the bath features a marble reproduction of Botticelli’s Venus. Venetian silver chandeliers and lantern complete the ambience.



## Policy Agreement

**Check in:** Check in is from 3:00pm - 6:00pm. If you are using a gift certificate, please have it ready for presentation upon your arrival. **All staff and guests must wear a face covering when interacting with each other and when you leave your suite.**

**Check out:** Check out is at 11:00am.

**Rates:** Rates are subject to change without notice. All holiday rates will be quoted individually. Taxes and gratuity are not included in our pricing. Payment for one nights room and tax is due 30 days prior to your stay. To guarantee your reservation, we require a credit card at the time of booking. When using a gift certificate for payment, a credit card for incidentals is still required.

**Cancellations:** Due to our intimate size, cancellations affect us significantly. Your deposit, less a \$25 processing fee per room booked, will be happily refunded if we receive notification at least 14 days prior to your arrival date. If you cancel between 14 days and the week before your reservation, half of the room rate becomes non-refundable. If however, you give us less than seven days' notice, we will charge you for the entire stay booked. In either event, we will make every effort to re-book the room and if we are able to do so all of your money will be refunded, minus the \$25 processing fee. Please note that the same policy applies to gift certificates.

**Pets:** Lynfred is not able to accommodate pets.

**Smoking:** Lynfred Winery Bed & Breakfast has a strict non-smoking policy which we enforce for the safety and comfort of all our guests. We do not allow smoking or candle burning in any of our guest rooms. Smoking is permitted outside on the exterior porches only.

**Breakfast:** Service is provided between 9:30 a.m. and 10 a.m. and is chef's choice. Your breakfast will be dropped off at your suite and we will knock on your door. **Please let us know of have any allergies or dietary restrictions.**

**Television:** We currently subscribe to Hulu and if you purchase a movie or anything else, your credit card on file will be charge.

**Room Occupancy:** Our couples-oriented facility and antique décor is only appropriate for two people per room. You must be at least 21 years of age to occupy a room. Parties/gathering in the suites will not be permitted at any time. Handicap accessible until 7:00pm.

**Damages/Cleaning:** When necessary, cleaning or replacement charges will be collected for damages beyond normal and regular facilities use, and for replacing missing items. Guests agree to pay for any damages to our facility and or fixtures. We ask that you please use the make-up remover towelettes that are supplied in your room to help avoid stains and damage to our premium linens. Damage to linens or towels resulting from use of body oils, red wine, shoe polish, spills, etc. will result in charges for cleaning, repair, or replacement of these items. Fees for damaged rooms or extra cleaning starts at \$75.

I understand Lynfred's terms and policies listed above. I agree to pay for the room rate quoted at the time of reservation, incidentals, or other amenities requested; with the credit card given to secure my reservation. I further agree that any extra cleaning charges, vandalism repair or missing items will be billed to my account accordingly.

Sign \_\_\_\_\_ Print \_\_\_\_\_ Date \_\_\_\_\_  
Date of Reservation: \_\_\_\_\_ Suite: \_\_\_\_\_



## Location and Parking

We are located at the corner of Main Street & Roselle Road (just pass Irving Park Road). Once you arrive you will see a small driveway that will lead you past our main entrance to our back-parking lot. You may park anywhere in this lot but please **do not park** along the wrought iron fence that is not on our lot. This is municipal zoning and overnight parking is restricted from 2:00 a.m. - 5:00 a.m. and all cars will be towed. Lynfred's lot is private property and your car will be safe overnight.

## Separate Overnight Guest Entrance

We have created a private Bed & Breakfast entrance for your convenience, but you still have the option to use our main entrance if you prefer. Should you choose to use the private entrance, look for the white Bed & Breakfast sign posted (Private Bed & Breakfast Entrance) by the back staircase in our parking lot. Follow the signs around the porch to the side entrance. Once you arrive at the entrance you will see a small box on the left wall. Press the small doorbell button on this box and we will come down to greet you. You will have a key to that entrance once you have checked in and may come and go as you please.

## Last Minute Changes During Your Stay

Due to our intimate size changes affect us significantly. We are happy to amend your breakfast time/location, add additional food, arrange specialty items, etc. but we cannot always accommodate your requests. As always, we will do our best to meet your needs but after the deadline date listed in your confirmation email some changes cannot be guaranteed.

Thank you for your support.



## Testimonials

To all who visit,

May your experience be as memorable as ours. The experience was more than we expected . . . the details of the room superb. These were only outdone by the staff. We will be back,

Mark and Laura ~Italian Suite

*Thank you for such a wonderful stay. The accommodations were first class. Your attention to detail and making us feel welcome were impeccable. . . Once again, thank you.*

Steve and Sue ~German Suite

There are no words that can describe how incredibly wonderful this place is . . . Thanks to everyone for making our stay spectacular. We will defiantly be back!!

Jim and Pam ~American Suite

*This stay was fabulous!! Love it!!!...We did indeed experience the passion for the three "L's" Luxury, Leisure and the Love of Lynfred wine.*

Julie and Jake ~French Suite